

Setting Sun Ranch Santa Ynez



VIEWS, VIEWS, & MORE VIEWS

10 +/- acres with incredible vistas of the Santa Ynez Valley and the Santa Barbara Mountains. The 3,400 +/- sq. ft. , 2 story residence was built in 1969 and is almost all original. Horse facilities include an 8 stall (12' x 16') breezeway barn, hay barn, arena, and irrigated pastures.

The parcel is a south facing slope which is ideal for planting vines, orchards, or?

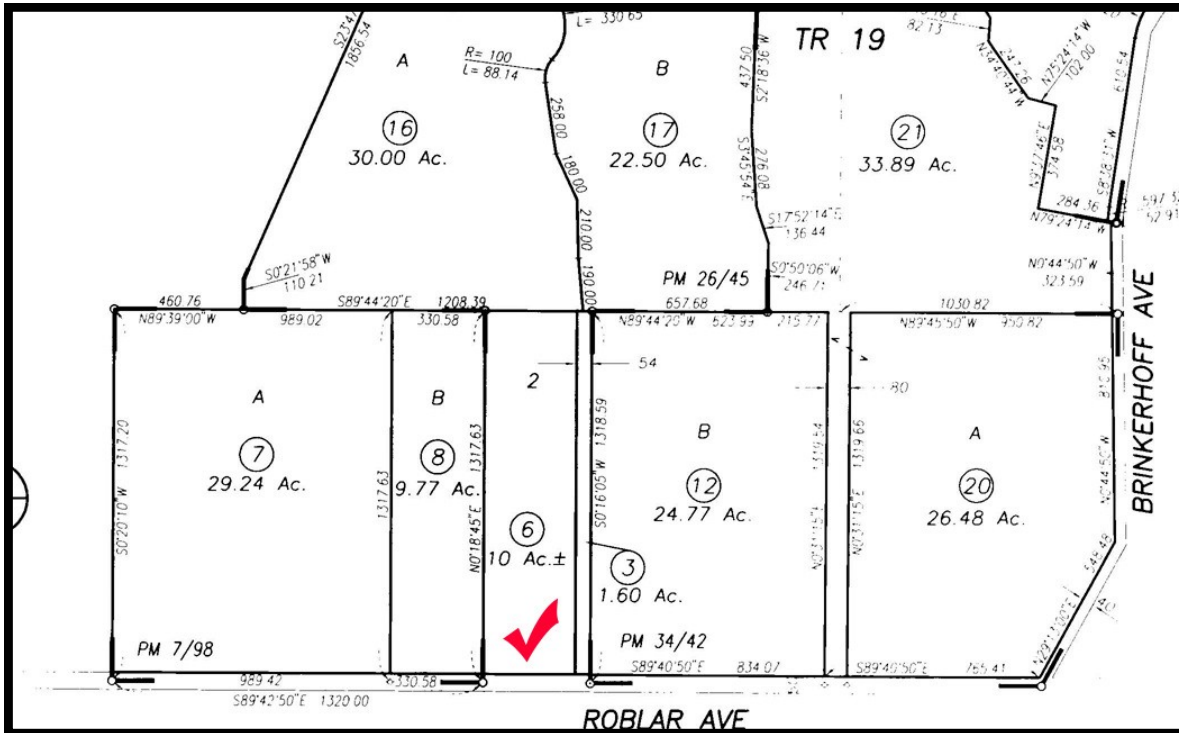


Lon Fletcher, Broker 805-934-7025
Jennifer Nation, Realtor Associate 805-688-9300

P.O. Box 1750, Santa Ynez, CA 93460 ~ info@syvproperties.com ~ www.syvproperties.com

The information is based upon information which we consider reliable, but because it has been supplied by third parties, we cannot represent that it is accurate or complete, and it should not be relied upon as such. This offering is subject to errors, omissions, change of price or withdrawal without notice.

Setting Sun Ranch - 3975 Roblar Avenue



The information is based upon information which we consider reliable, but because it has been supplied by third parties, we cannot represent that it is accurate or complete, and it should not be relied upon as such. This offering is subject to errors, omissions, change of price or withdrawal without notice change of price or withdrawal without notice.